

2020

fleetwoodrv.com

CLASS A DIESEL | PACE ARROW LXE



 **FLEETWOOD RV**
PACE ARROW LXE

- 2 | INTRO
- 4 | FREEDOM BRIDGE
- 6 | INTERIOR GALLERY
- 12 | FLOORPLANS
- 14 | EXTERIOR GRAPHICS
- 15 | DECOR
- 16 | STANDARDS AND OPTIONS
- 18 | OUTSTANDING STANDARDS AND OPTIONS
- 19 | SPECIFICATION CHARTS



BE FREE TO GO FARTHER.

When it comes to full-size diesel luxury coupled with value, Pace Arrow LXE can't be beat. Here you get Fleetwood's custom Freedom Bridge® chassis, an on-demand tankless water heater, 105-gallon fresh water holding tank, 100-gallon fuel capacity and 100w standard solar panel. Plus, it boasts industry-leading pass-through storage.

We refreshed the looks of Pace Arrow LXE quite a bit for 2020—including updated furniture, exterior graphics and paint colors, three new interior décor packages and three new cabinetry options. The kitchen now features an expanded galley window and Whirlpool® residential appliances, including a 36-inch side-by-side refrigerator with in-door ice and water.

If you want to escape from it all, then Pace Arrow LXE hits the bullseye.



Fleetwood RV and Freightliner Custom Chassis have teamed up to bring you the ultimate in luxury, power and performance. Introducing the newly re-engineered Freedom Bridge foundation.

Freedom Bridge foundation combines the unrivaled strength and storage capacity of Fleetwood RV's exclusive modular design with the high-performance innovation of a Freightliner chassis—all backed by the nation's largest service support network. The new Freedom Bridge brings performance and peace of mind together, perfectly.

Freedom Bridge XCM is the foundation for Discovery LXE models.



DriveTech rolls together FCCC's latest innovations—like the OptiView all-digital LCD dash display and FCCC's all-new ergonomic steering wheel and column-mounted controls—into one comfortable, easy-to-use driver console.

INTRODUCING DRIVETECH—the most advanced display and control system in the RV industry. DriveTech is the first RV driving system to prioritize safety by putting every command in one easy-to-reach location. The all-new ergonomic steering wheel and column-mounted controls are paired with OptiView's all-digital gauge display to create a more automotive-like feel and set the industry standard for luxury RV driving. And it's only from Freightliner Custom Chassis.

PRIORITIZING DRIVER SAFETY
A recent study reported that 80% of collisions and 65% of near collisions involved some form of driver distraction, often from using electronic devices while driving. DriveTech prioritizes driver safety by streamlining and simplifying controls to help drivers focus their full attention on maneuvering and piloting the coach.

CONNECTING WITH RV DRIVER EXPECTATIONS
The world is changing. By 2020, more than 90% of cars sold will be connected—equipped with Internet access and a wireless network to share data with devices both inside and outside the vehicle. DriveTech updates the RV driver's station to align with that of the automotive industry, delivering the luxury experience modern drivers expect.



Rated up to 24,000 lbs., V-Ride allows for more luxury amenities, additional cargo capacity and superior roll stability.



Increased Storage: Oversized pass-through storage re-engineered with slide rails integrated into the floor, creating more storage space and easier access.



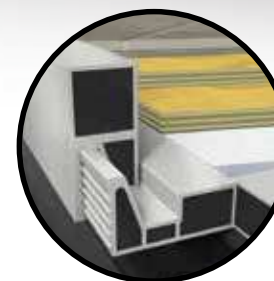
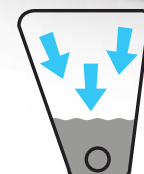
OptiView is the RV industry's first LED instrument cluster, featuring bright, clear graphics, colors and menus. 360-degree camera system capability, Bluetooth® connectivity and on-demand operation add convenience and control.



DriveTech's ergonomically-designed steering wheel and easy-to-reach, column-mounted controls turn piloting your RV into a driver-friendly automotive experience.



Wedge Tank Design: Wedge-shaped holding tanks ensure thorough drainage of black and grey water.



Maximized Flooring Strength: Double-thick flooring effectively deadens exterior noise and increases durability.



Huckbolts: Aerospace-grade, vibration-resistant fasteners for unrivaled strength and reliability.



RV OWNERCARE

Limited one-year/15,000-mile coach warranty and three-year/45,000-mile structural warranty, whichever occurs first, and it is fully transferable for the first 12 months. RV OWNERCARE is one of the RV industry's most comprehensive programs and includes systems, appliances, components and construction, with no deductible and no service charge.

Chassis Warranty provided by Freightliner Custom Chassis Corporation®

ADDITIONAL FEATURES

A Premium SACHS® Shocks increase comfort, safety and dependability. **B I-Beam Construction** achieves a torsion rating that is 30% higher than the competition. **C Dual-Side Fuel Fills** provide high-flow access to the 100-gallon fuel tank from either side of the RV. **D Impressive Towing Capacity** with integrated receiver hitch ratings of 10,000 lbs. and 15,000 lbs., offering a wide range of towing capabilities.* **E Central Protective Raceway** houses air, hydraulic and electrical lines while providing easy access. **F Michelin® Tires w/Polished Aluminum Wheels** give you on-the-road performance and let you arrive in style.



PACE LXE 38K
Shown in Mystic decor
with Cappuccino cabinetry

PACE ARROW LXE

37R | 38F | 38K | 38N



PACE LXE 38K
Shown in Mystic decor
with Cappuccino cabinetry

PACE ARROW LXE 38K
Shown in Vapor decor
with Oxford cabinetry



PACE ARROW LXE 38K
Shown in Vapor decor
with Oxford cabinetry



PACE LXE 38K
Shown in Mystic decor
with Cappuccino cabinetry



FLEETWOOD RV
Build your own Pace LXE at
fleetwoodrv.com/build-your-own



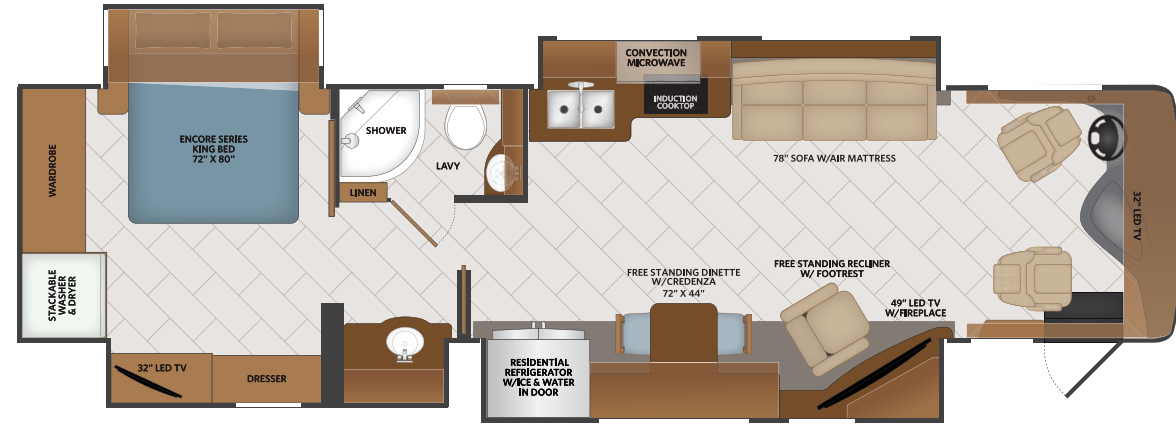


 **FLEETWOOD RV**

Visit our website at
fleetwoodrv.com

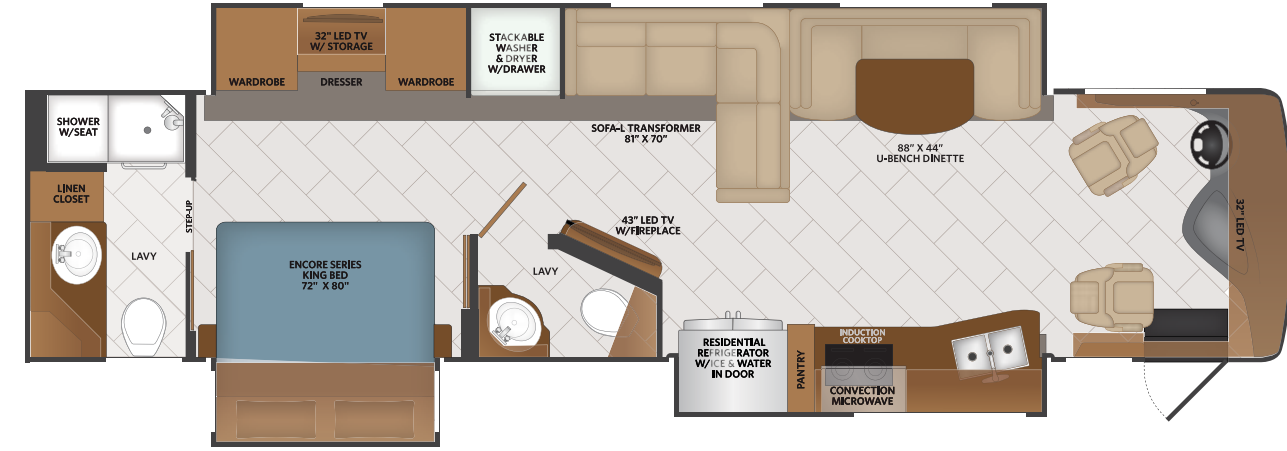
37R

Options:
191, 194, 217,
237, 436, 563,
833



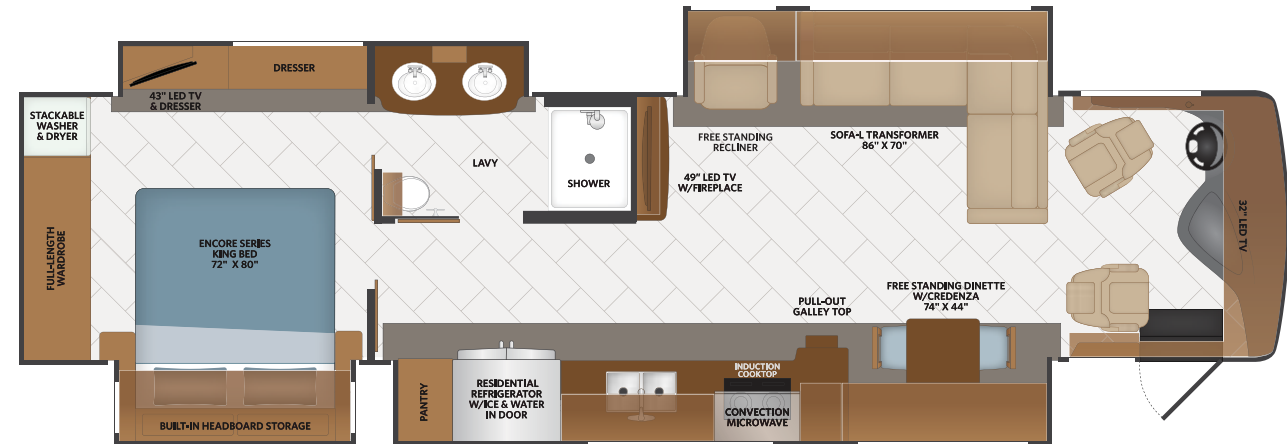
38K

Options:
194, 217, 237,
436, 563, 833



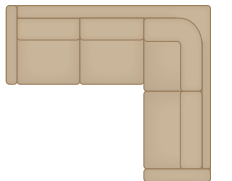
38F

Options:
203, 217, 237,
436, 563, 830



38N

Options:
194, 217, 237,
436, 563, 809,
833



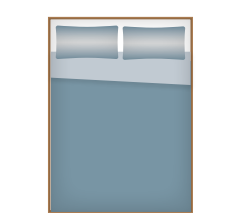
191 EXPANDABLE L-SOFA



194 THEATRE SEATING SOFA



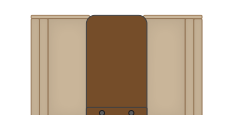
203 SOFA BED W/MATRESS



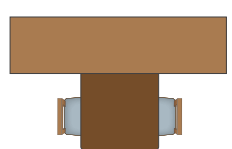
217 HIDE-A-LOFT™ DROP DOWN TWIN BED



809 L-SHAPED DINETTE



830 FACING DINETTE



833 FREE STANDING DINETTE w/CREDENZA

AVAILABLE OPTIONS

099	SATELLITE DELETE	436	CSA FREIGHTLINER® PACKAGE
191	EXPANDABLE L-SOFA	563	TECHNOLOGY PACKAGE
194	THEATRE SEATING SOFA	807	SOFA BED W/MATRESS
203	SOFA BED W/AIR MATTRESS	809	L-SHAPED DINETTE
217	HIDE-A-LOFT™ DROP DOWN TWIN BED	830	FACING DINETTE
237	THIRD ROOF A/C	833	FREE STANDING DINETTE w/CREDENZA

Product information, photography and illustrations included in this publication were as accurate as possible at the time of printing.

EXTERIOR GRAPHICS



Butler



Harmony



Imperial



Stride

STATE-OF-THE-ART TECHNOLOGY
Optional Package Upgrade

Technology Package Includes:

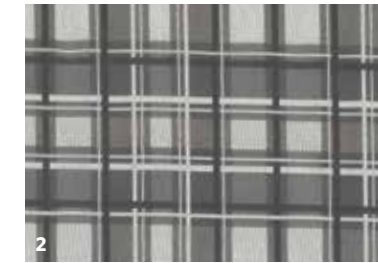
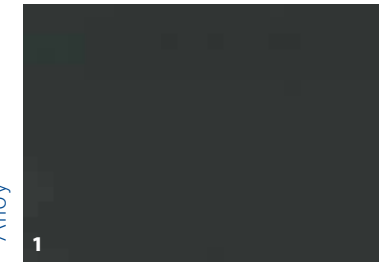
- WiFiRanger™ Sky4 ProPack w/LTE
- WeBoost Cell Booster
- MobileEye Collision Mitigation
- 265 Watt Solar Panel



Product information, photography and illustrations included in this publication were as accurate as possible at the time of printing.

INTERIOR DECOR

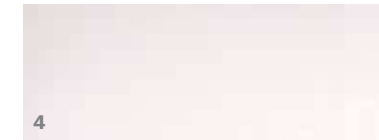
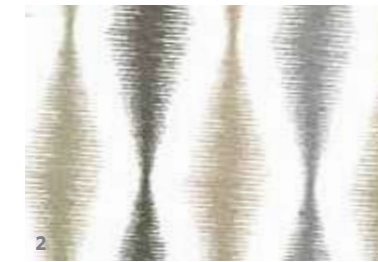
Alloy



Mystic



Vapor



1 SOFA
2 LIVING ACCENT

3 BEDSPREAD
4 COUNTERTOP

5 FLOORING
6 CARPET

CABINERY



Cappuccino



Greystone



Oxford

Pace Arrow LXE interior designer recommends:

- Alloy décor with Cappuccino or Greystone Cabinetry
- Mystic décor with Greystone or Oxford Cabinetry
- Vapor décor with Oxford Cabinetry

Create a customized look that reflects your personal style.



BLIND SPOT DETECTION
Ensure smart, safe driving with Velvac® blind-spot upgraded mirrors for your Pace Arrow LXE. A safety feature, where a light will illuminate on the side mirror if an object is in the blind spot ensuring safe travels. Mirrors are power, heated, remote with turn signals and side cameras.



GENEROUS EXTERIOR STORAGE
Take along more of what you need and bring home more of what you want, with deep, easy-to-clean pass-through compartments.



ON-DEMAND WATER HEATER
Provides continuous hot water. A much more efficient alternative to traditional tank style water heaters.



HIDE-A-LOFT™ DROP DOWN QUEEN BED
Invite more guests on your road trip without compromising space featuring industry-leading headroom and up to 500lb. capacity. Power drop down capabilities with a LED TV and mattress is included.



MULTI-PURPOSE CREATIVE FURNITURE
Villa residential style furniture with creative, functional space saving designs. Offering as much functionality and as many options that are durable, comfortable and stylish for those long trips.



AUTOMOTIVE-INSPIRED DASH
Drive in comfort with an LCD digital dash with steering wheel controls, auto headlights, three-camera backup monitor and 10-inch touchscreen stereo with Bluetooth®, GPS and Sirius XM® Radio capability.



TOUCH PAD ELECTRONICS PANEL
Easily operate your RV's systems and accessories with this modern LCD touchscreen control panel.



DUAL A/C UNITS WITH HEAT PUMP
Stay cool on hot days and warm on cool days with two roof-mounted 15K BTU high-efficiency units are standard. Pace Arrow LXE has the option to upgrade to a third roof A/C for additional power.



OUR VERY OWN FLEETWOOD RV MOTORHOME SERVICE CENTERS

At Fleetwood RV, we strive to deliver peace-of-mind at every turn. Our devotion to customer service starts with our trusted dealer network and spans to our own staff of motorhome service professionals at REV Recreation Group's regional technical centers. The motorhome service centers are strategically located throughout the United States to provide you convenient service wherever the road takes you.

Below, you'll find the closest motorhome service center, as well as a list of the other centers. Please visit www.fleetwoodrv.com/motorhome-service-centers to schedule a Service Appointment.

East Coast
REV Technical Center
800-509-3417

West Coast
REV Technical Center
877-466-6226

ROADSIDE ASSISTANCE. ANYWHERE. ANYTIME.

- 24/7 CUSTOMER SUPPORT FOR:
- FUEL
 - BATTERY
 - LOCKSMITH
 - TOWING
 - SLIDE-OUT ISSUES
 - AND MUCH MORE!

1-855-268-0414



One-year of REV Assist is free with the purchase of any new 2020 Fleetwood. You may extend your coverage after the first year at www.revgroup.com/rev-assist.

PACE ARROW LXE

CHASSIS	37R	38F	38K	38N
Wheelbase (inches)	276"	276"	263"	309"
Front GAWR (lbs)	12,400	12,400	12,400	13,600
Rear GAWR (lbs)	21,000	21,000	21,000	21,000
GCWR (lbs)	33,000	33,000	33,000	33,000
Hitch Rating Weight (lbs)	10,000	10,000	10,000	15,000
Tongue Weight (lbs)	1,000	1,000	1,000	1,500
Fuel Capacity (gal)	100	100	100	100

DIMENSIONS AND CAPACITIES	37R	38F	38K	38N
Overall Length (inches)	38' 8"	40' 1"	38' 8"	38' 8"
Overall Height (suspension inflated)	12' 10"	12' 10"	12' 10"	12' 10"
Overall Width (maximum)	102"	102"	102"	102"
Interior Height (maximum)	84"	84"	84"	84"
Interior Width (maximum)	96"	96"	96"	96"
Patio Awning Width (ft.)	14'	18'	10' 8"	10' 8"
Interior Storage (cu. ft.)	136	158	148	152
Exterior Storage (cu. ft.)	117	142	127	127
Fresh Water Holding Tank (gal)	105	105	105	105
Grey Water Holding Tank (gal)	75	75	75	75
Black Water Holding Tank (gal)	50	50	50	50
Appliance Propane Tank (gal)	38.7	38.7	38.7	38.7
Tankless Water Heater	S	S	S	S

Product information, photography and illustrations included in this publication were as accurate as possible at the time of printing.



FREEDOM BRIDGE® CHASSIS

Model: Freightliner® XCM Series
Engine: Cummins ISB 6.7L
Transmission: Allison® 2,500 MH 6-Speed w/Electronic Shifter
Alternator: Delcom Remy 160 Amp
Torque: 700 lb.-ft. @ 1,600 RPM
Horsepower: 340HP

DISCLAIMERS

1. GVWR (Gross Vehicle Weight Rating) is the maximum permissible weight of this fully loaded motorhome. The GVWR is equal to or greater than the sum of the (UVW) unloaded vehicle weight plus the (OCCC) occupant cargo-carrying capacity.
2. GAWR (Gross Axle Weight Rating) is the maximum permissible loaded weight a specific axle is designed to carry.
3. GCWR (Gross Combined Weight Rating) is the value specified by the motorhome manufacturer as the maximum allowable loaded weight of this motor home with its towed vehicle. Towing and braking capacities may be different. Refer to Fleetwood and chassis manufacturer's manuals for complete information.
4. Length measured from front bumper to rear bumper (excludes accessories).
5. Excludes safety equipment and awnings.
6. Motorhomes feature a body width over 96" which will restrict your access to certain roads. Before purchasing, you should research any state and/or province road laws which may affect your usage.
7. Tank manufacturer's listed water capacity (WC). Actual propane capacity is 80% of water listing as required by the safety code.

† The chassis manufacturer recommends the installation of a supplemental brake control system to activate the brakes on the vehicle or trailer you are towing. Hitch receiver ratings expressed are maximum for the hitch receiver installed and may require the purchase of additional equipment that is dependent on the weight of the towed load. Consult with hitch receiver manufacturer for further information.

* UVW and OCCC are found on the label containing the federal certification tag in each RV.
** Seatbelts and locations are shown in the brochure for display purposes only. Actual numbers and locations will vary by model.

*** All 2020 REV Recreation Group motorhomes include a limited one year/15,000-mile coach warranty and three-year/45,000-mile structural warranty, whichever occurs first, and is fully transferable for the first 12 months.

FLEETWOOD MOTORHOME ASSOCIATION

As a Fleetwood RV owner, you're invited to become a member of the Fleetwood Motorhome Association (FMA). Becoming a member is the perfect way to meet other Fleetwood owners who love to travel across America and share in the RV lifestyle. Visit the FMA website at www.fma4fun.org to learn more and join the fun.

CONTACT US

To locate a dealer near you, visit our website at www.fleetwoodrv.com or call 1-800-322-8216. We can also be contacted at Fleetwood RV Customer Relations, P.O. Box 1007, Decatur, IN 46733.

IMPORTANT—PLEASE READ: Product information, photography and illustrations included in this publication were as accurate as possible at the time of printing. For further product information and changes, please visit our website at www.fleetwoodrv.com or contact your local Fleetwood RV dealer. Prices, materials, design and specifications are subject to change without notice. All weights, fuel, liquid capacities and dimensions are approximate. Fleetwood RV has designed its recreational vehicles to provide a variety of uses for its customers. Each vehicle features optimal seating, sleeping, storage and fluid capacities. The user is responsible for selecting the proper combination of loads (i.e., occupants, equipment, fluids, cargo, etc.) to ensure that the vehicle's capacities are not exceeded.

YOUR LOCAL DEALER



Fleetwood RV is part of REV Recreation Group, a division of REV Group, Inc., a family of 29 industry-leading motor vehicle brands. At REV Group, we innovate, design and build products that connect and protect thousands of people every day—our trusted vehicles are engineered with the utmost rigor and precision to deliver the highest levels of performance, reliability, durability and safety.



IMPORTANT—PLEASE READ: Product information, photography and illustrations included in this publication were as accurate as possible at the time of printing. For further product information and changes, please visit our website at www.fleetwoodrv.com or contact your local Fleetwood RV dealer. Prices, materials, design and specifications are subject to change without notice. All weights, fuel, liquid capacities and dimensions are approximate. Fleetwood RV has designed its recreational vehicles to provide a variety of uses for its customers. Each vehicle features optimal seating, sleeping, storage and fluid capacities. The user is responsible for selecting the proper combination of loads (i.e., occupants, equipment, fluids, cargo, etc.) to ensure that the vehicle's capacities are not exceeded.

www.fleetwoodrv.com

©2019 REV Group, Inc. Printed in the USA. 10/19. Model Year 2020, First Edition.

Part #: L93-0021